

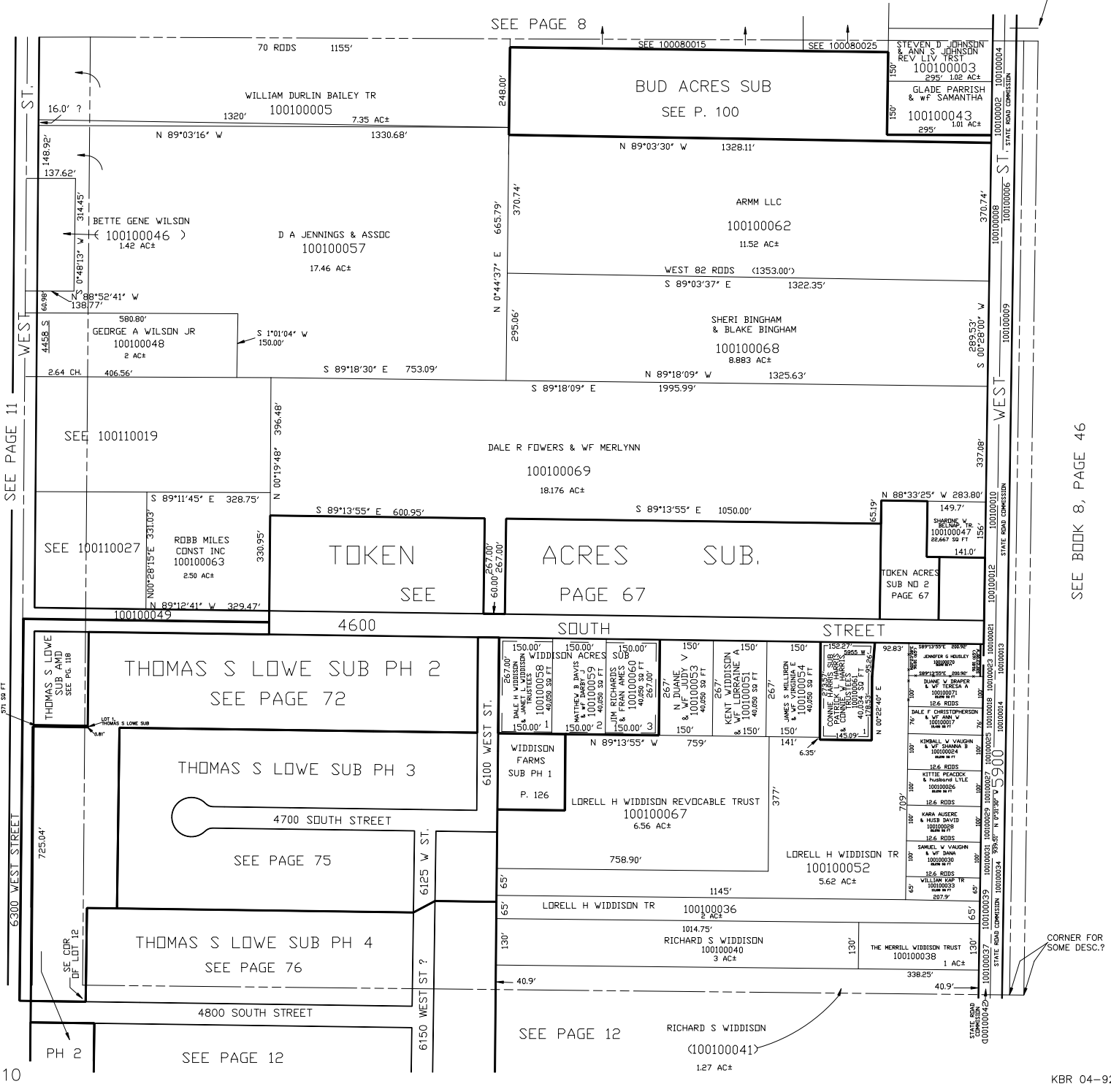
SE 1/4
SECTION 12, T.5N., R.3W., S.L.B. & M.

TAXING UNIT: 376

IN HOOPER CITY
SCALE 1" = 200'

COR. FOR
SOME DESC.

SEE PAGE 8



SEE PAGE 11

WEST ST.

STATE ROAD COMMISSION 100100004
STATE ROAD COMMISSION 100100002
STATE ROAD COMMISSION 100100006
STATE ROAD COMMISSION 100100009
STATE ROAD COMMISSION 100100010
STATE ROAD COMMISSION 100100012
STATE ROAD COMMISSION 100100021
STATE ROAD COMMISSION 100100024
STATE ROAD COMMISSION 100100027
STATE ROAD COMMISSION 100100034
STATE ROAD COMMISSION 100100039
STATE ROAD COMMISSION 100100042

SEE BOOK 8, PAGE 46

CORNER FOR
SOME DESC.?